



430 Schooley's Mountain Road
Hackettstown, New Jersey 07840

Tel: 908-852-4801 Fax: 908-684-5023 Website: www.heathvillage.com E-mail: info@heathvillage.com

FOLLOW US ON SOCIAL MEDIA:





Retirement As It Should Be

Greetings!

Thank you for your interest in Heath Village Retirement Community. While progress remains a priority at Heath Village so do our traditions. Our commitment to providing older adults with a living environment that fosters a meaningful life with security, dignity, and personal and spiritual well-being remains paramount. We are very proud of the warm and wonderful community that is Heath Village.

Since its grand opening in 1966, Heath Village has grown from a small community of five apartment areas and minimal healthcare services to an expansive 100+ acre campus community of approximately 200 unfurnished apartments where emphasis is on independent living. Also available

are facilities for health care and comprehensive nursing care. As personal preferences or health needs change, it is possible to move from one area of the campus to another.

We hope that you will find the information enclosed helpful. Should you have any questions or would like to arrange a tour, please call the Housing Services Department at 908-852-4801.

Again, thank you for your interest. We are hopeful Heath Village will be able to provide the setting and services you are seeking. Best wishes to you and your family for good health and happiness.

Sincerely,

The Heath Village Board of Trustees



Care, When You Need it Most

At Heath Village you'll have peace of mind knowing that support services and nursing care are here when you need them most. No matter the level of living, our dedicated staff works individually with each resident to develop a program of personal care and services that will result in a maximum level of wellness and independence.



SUB-ACUTE REHABILITATION & OUTPATIENT PHYSICIAN SERVICES

Heath Village offers a broad spectrum of on-site rehabilitation therapy services including physical, occupational and speech therapies. Services are available in our fully-equipped Therapy Department under the professional supervision of licensed therapists.

You'll appreciate the convenience of on-site physician office hours in our Outpatient Department, which include a variety of doctors and specialists. Residents are encouraged to take advantage of our wellness health services including blood pressure screenings, annual flu shots, Helping Hands program, laboratory services and more.

MAYFLOWER HOUSE RESIDENTIAL HEALTH CARE

Residents flourish in the warm and gracious living environment of the Mayflower House at Heath Village. A licensed residential health care facility, Mayflower House offers around-the-clock supervision for residents who do not need nursing care, but require a program of minimal assistance and specific services.

THE MEADOWS NURSING & REHABILITATION FACILITY

Offering exceptional and personalized care, The Meadows Nursing and Rehabilitation Facility is a New Jersey state licensed 108-bed facility. Our health care center is certified and rated five stars by Medicare. We offer comprehensive and professional nursing services for short and long-term care as well as respite stays.

Welcome Home...

Located in scenic western Morris County, Heath Village is a not-for-profit, full service retirement community. We offer a choice of lifestyle options, first-rate amenities, numerous social opportunities and the security of comprehensive health care services on-site. We invite you to visit us today and learn more about life at our unique retirement community.

A UNIQUE FINANCIAL PLAN

Having served New Jersey's senior population for close to 60 years, Heath Village understands the importance of being flexible. Our unique pay-as-you-go financial arrangement allows you to remain in control of your assets. Also available is an optional, one-time community fee which allows your monthly rent to be reduced. Our philosophy is that you should only pay for *what you need, when you need it.*

We have been offering "unbundled" services since our inception. Apartments are offered on a rental basis with a renewable yearly lease. Monthly fees are based on the type of accommodations selected. Residents may add services as they choose. If your preferences or needs should change, a move within the Village is facilitated very easily.



Independent Living at its Finest

Heath Village represents an affordable choice for today's retiree who wants to remain active, involved and independent. Prospective residents can choose from approximately 200 independent apartments with various floor plans ranging in size from studios to spacious 2 bedrooms, 2 baths.

Village apartments and cottages are nestled within "miniature neighborhoods" scattered throughout the campus. All single story structures, our apartments offer beautiful views of the campus.

LIFE IS EASY AT HEATH VILLAGE

Our maintenance-free, resort-style living gives you the freedom to live your life to the fullest. Apartments are leased unfurnished so you can create your own "personal touch" with individualized decorating. Pets are welcome! A 24-hour emergency call system provides security and peace of mind.

BON APPÉTIT

Dining is a wonderful part of the Heath Village living experience.

Our creative and talented chefs are sure to please your palate with a wide selection of delicious American and Continental cuisine, freshly prepared from the finest ingredients. You'll enjoy elegant dining and personalized service from our trained and caring wait staff.



Residents may choose to have breakfast, lunch or dinner in one of our three dining venues. Or, Dining Services can deliver dinner right to your door!

ENTERTAINING MADE EASY...

If you love to entertain you'll be pleased to know that Dining Services is available to cater your special event. They are happy to help you plan anything from a small dinner party in your apartment to a large, festive celebration held in one of our beautiful dining rooms.

ACTIVE LIFESTYLES... INTERESTING PEOPLE

Come to Heath Village and find what you enjoy most...opportunities for friendship, recreation and wonderful new adventures. We offer a blend of activities, life enrichment programs and social events that will enhance just about any lifestyle.

Why not try a new fitness class, participate in a lecture series, or practice your short game on our 3-hole pitch 'n putt golf course? Or, maybe you prefer to exercise your green thumb in our community garden, join a Bocce team, or work with your hands in our well-equipped wood shop? You may also choose to relax at the pool, play a leisurely game of cards, or meet up with friends for Happy Hour at Paddy's Pub.

Residents may also enjoy regular excursions to a variety of interesting places such as art galleries, museums, concerts and the theater.



Or, if dining out is more your style, you can sign up for "Lunch on the Town" and sample delicious food from area restaurants. Residents who like to travel can also enjoy overnight trips to fun and exciting destinations.

Evenings provide a whole new selection of entertainment, including movies, cocktail parties, musical groups and interesting seminars.

SERVICES AND AMENITIES*

MAINTENANCE

- Electrical
- Interior or exterior of buildings
- Lawn maintenance
- Plumbing
- Snow removal
- Trash removal

SECURITY

- 24-hour response
- Emergency call system
- Fire and smoke alarms
- Personal emergency pendant

TRANSPORTATION

- Airport service
- Area churches
- Local doctors and hospital visits
- Local shopping areas
- On campus club cart service

SOCIAL ACTIVITIES

- Cultural
- Educational
- Recreational
- Social
- Spiritual
- Wellness

DINING

- Heritage Room
- Paddy's Pub
- Village Café

PARKING

- Carports
- Guest parking
- Resident parking

HEALTH SERVICES

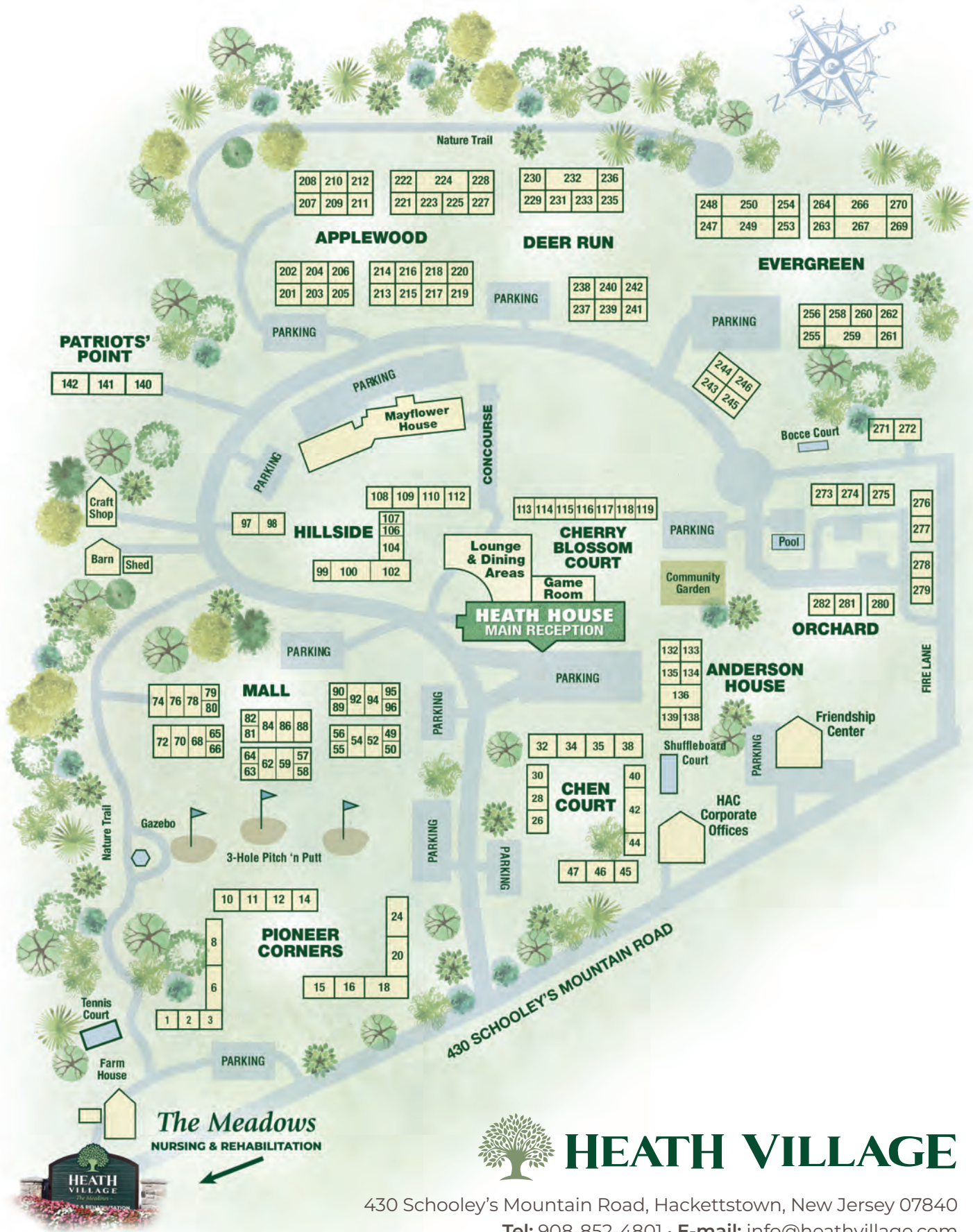
- Helping Hands program
- Medical Director
- Outpatient department
- Rehabilitation therapies
- Skilled nursing facility

FEATURES

- Billiards
- Bocce
- Chapel
- Community garden
- Computer room
- Fitness center & classes
- Game rooms
- Golf course (3 hole Pitch 'n Putt)
- Guest accommodations
- Heath Village cable television channel
- Intergenerational Pen-Pal program
- Library
- Nature/hiking trails
- Outdoor courtyard & patio
- Ping pong
- Residents' Council
- Salon and Barber Shop
- Shuffle board (outdoor & indoor)
- Swimming pool (saltwater) and hot tub (outdoor)
- Tennis court
- Thrift Shop (The Friendship Store)
- Village Gift shoppe
- Volunteer opportunities
- Internet/Wi-Fi
- Woodworking shop

*Fees may apply

CAMPUS MAP



The Meadows
NURSING & REHABILITATION



HEATH VILLAGE

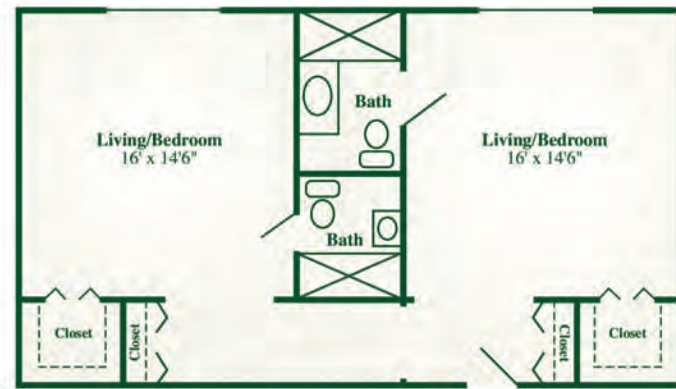
430 Schooley's Mountain Road, Hackettstown, New Jersey 07840
Tel: 908-852-4801 • E-mail: info@heathvillage.com

APARTMENT LAYOUTS

Heath House



HEATH HOUSE STUDIO



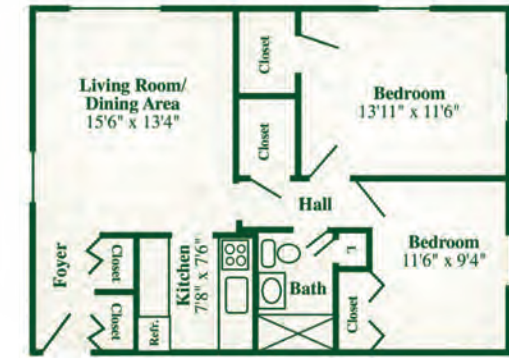
HEATH HOUSE SUITE

INDEPENDENT APARTMENT LAYOUTS

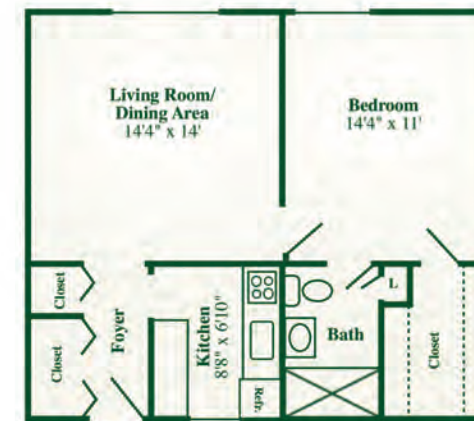
Lower Campus



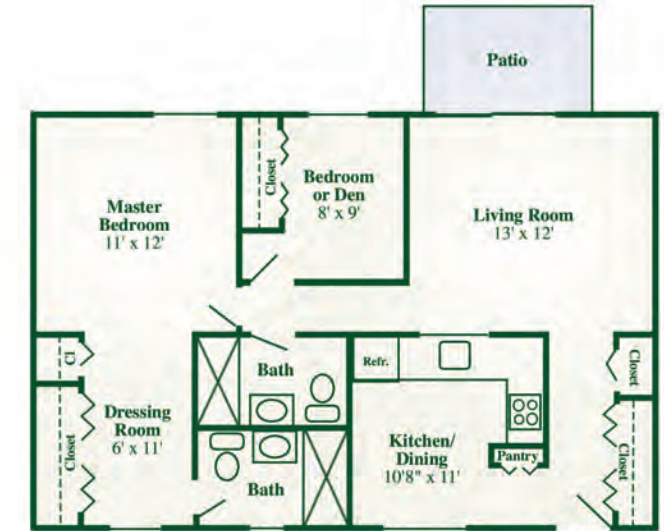
STUDIO



TWO BEDROOMS



ONE BEDROOM



TWO BEDROOMS/TWO BATHS



DELUXE ONE BEDROOM

INDEPENDENT APARTMENT LAYOUTS

Upper Campus



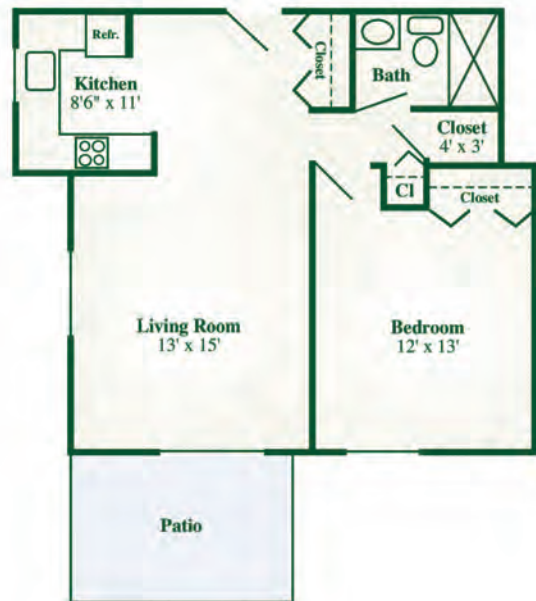
ONE BEDROOM

A



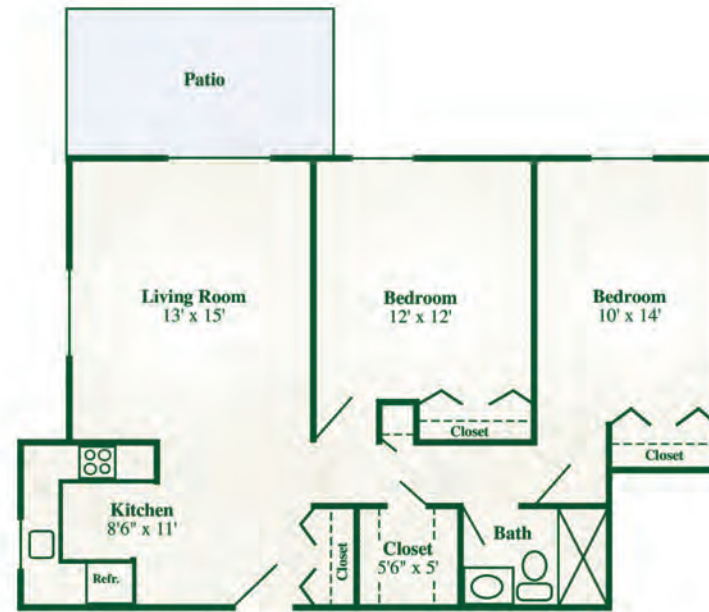
ONE BEDROOM

B

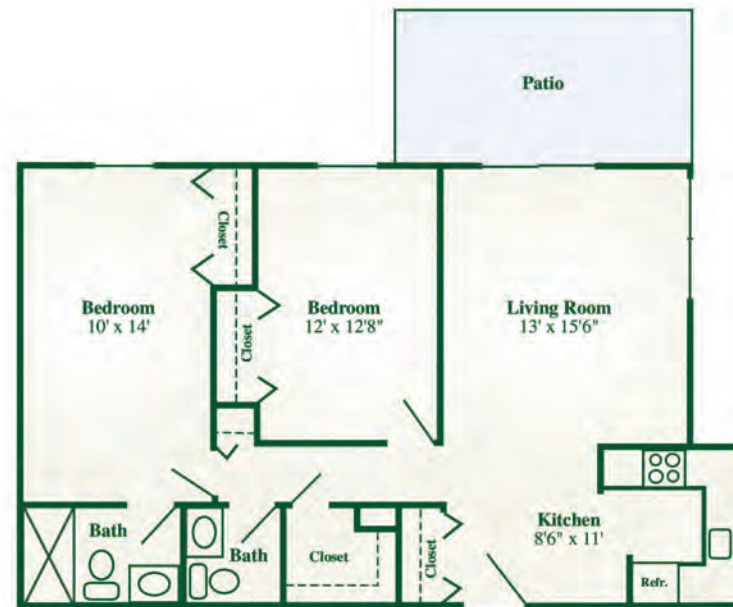


ONE BEDROOM

C



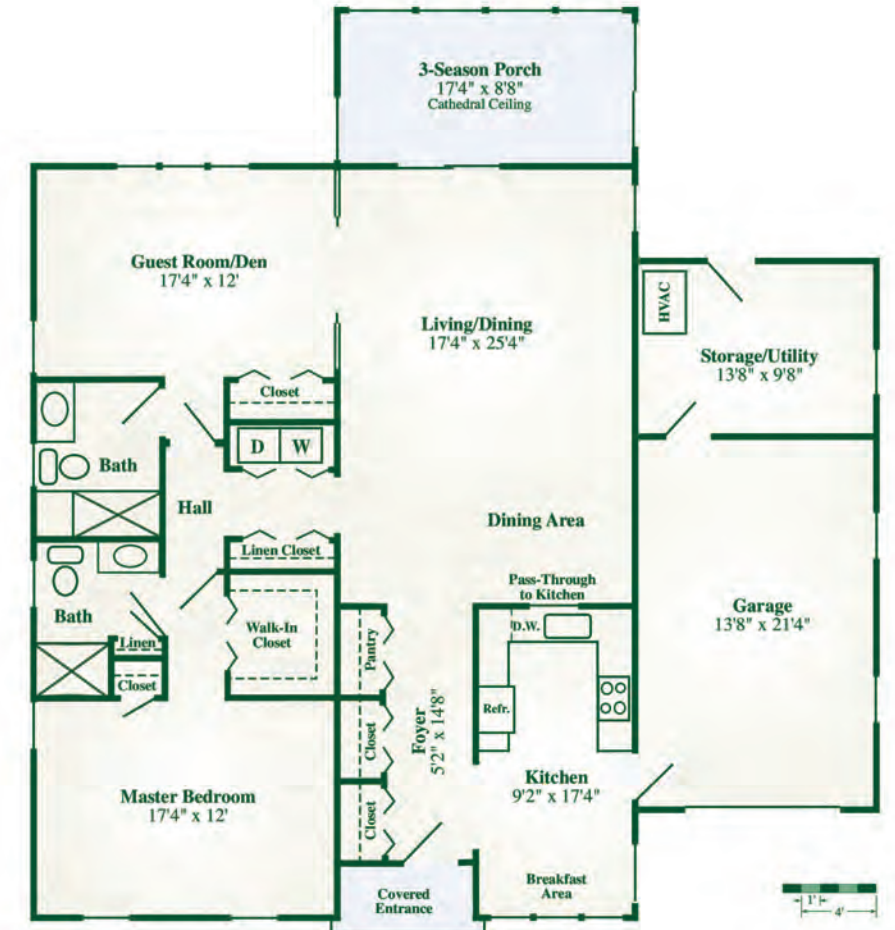
TWO BEDROOMS



TWO BEDROOMS

One and a Half Baths

Cottages



HEATH VILLAGE

430 Schooley's Mountain Road, Hackettstown, New Jersey 07840

Tel: 908-852-4801 • E-mail: info@heathvillage.com

VALUE COMPARISON WORKSHEET

When considering a move to a retirement community, you may wish to do a cost comparison. By completing the worksheet below, you will have a clearer picture of what you can anticipate your expenses to be.

MONTHLY FEE	PRESENT HOUSING	HEATH VILLAGE
Rent or Mortgage		
Telephone, Cable Television and Internet Service		
Renter's Insurance		
Property Insurance		Included
Property Taxes		Included
Electricity		Included
Gas or Oil Heat		Included
Water and Sewer		Included
Garbage Collection		Included
Lawn Services/Snow Removal		Included
Home Maintenance		Included
Routine & Major Repairs (heating, air conditioner, water heater, roof, etc.)		Included
Security		Included
TOTAL		



HEATH VILLAGE

430 Schooley's Mountain Road, Hackettstown, New Jersey 07840

Tel: 908-852-4801 • E-mail: info@heathvillage.com